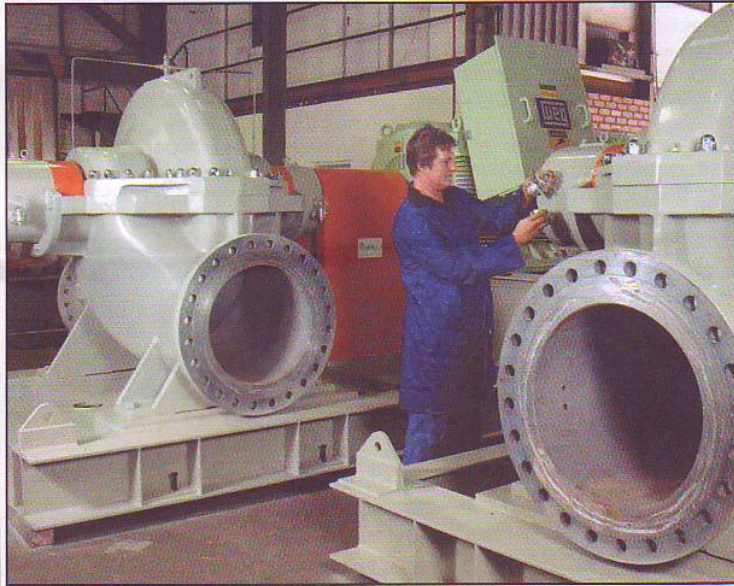


Multiple products on display at Electra Mining



This split-case pump manufactured by APE Pumps is representative of group capabilities. Visitors to Stand 2B in Hall 7 will also find mining solutions from PSV Services, consumables from Omnirapid and lining solutions from Group Line Projects. There will be pumps on display from both Dasher and APE Pumps.

SPECIALIST engineering group PSV Holdings will utilise this year's Electra Mining exposition to showcase products and services from nine subsidiary companies.

Visitors to Stand 2B in Hall 7 will find mining solutions from PSV Services, consumables from Omnirapid and lining solutions from Group Line Projects. There will also be pumps on display from both Dasher and APE Pumps. Umzantsi Africa will use the PSV Holdings stand to launch its new knife-gate valve, the Geomet Mark II.

Three PSV Holdings companies, Rand Air & Gas, Petro-Logic and Engineering Linings, are first-time exhibitors at the exposition. They will showcase gas and cryogenic products and tanks, petroleum and diesel dispensing equipment, and linings for underground and surface dams.

Dave Johnson, group business development manager for PSV Holdings, pointed out that 70 percent of the group's companies list mining among their most important target markets.

"Electra Mining is ranked among the world's premier mining exhibitions, so we want visitors to gain an understanding of the depth of the PSV group, and of our focus on customer service.

"Our stand will communicate the benefits of sourcing many different products from a single, solid and financially sound engineering group of companies," he said.

The launch by Umzantsi Africa of its Geomet Mark II knife-gate valve is expected to attract particular attention. This valve, developed and manufactured by Dasher in South Africa, has been designed for higher-pressure applications than the Mark I.

Featuring a self-cleaning guide, it is offered in either polyurethane or rubber-lined options, the latter moulded at elevated pressure and temperature to produce superior wear resistance that prevents the seat from clogging. A gland packing seal eliminates leaks around the blade.

Noteworthy among recent successes has been the vendor-held stock (VHS) contract secured by PSV Services for the dewatering pumps at Mopani Copper Mines. This five-year contract provides for the maintenance on site of specific stock levels of de-watering pumps and spares, and for the maintenance and replacement of pumps when necessary, leaving the copper mines free to focus on the primary activity of mining. *Enquiry No: 36*

**KZN INDUSTRIAL & BUSINESS NEWS –
AUGUST/SEPTEMBER 2008**